

4

3

2

1

THIS DRAWING IS UNPUBLISHED.

RELEASED FOR PUBLICATION

© COPYRIGHT -

ALL RIGHTS RESERVED.

LOC	DIST	REVISIONS					
A1	-	P	LTR	DESCRIPTION	DATE	DWN	APVD
			C4	ECR-14-017645	28NOV2014	SK	JS
			C5	ECR-16-004045	24MAR2016	KD	RR
			C6	ECR-16-010013	19JUL2016	KD	RR
			C7	ECR-16-013486	26SEP2016	KD	RR

Technical drawing showing a side view of a contact assembly. Dimensions include: 4.8, 0.4, 0.25, 3.5, 4.7, 6.3, and min 0.7. Material callout: X10CrNi188. Section lines A-A and B-B are indicated.

Section B-B showing a cross-section of the contact tip with a width of 3.8 and a height of (4.1). A fillet radius of $\phi 1.6$ is shown.

Section A-A showing a cross-section of the contact tip with a width of 4.8 and a height of (4.9). A fillet radius of $\phi 2.9$ is shown.

Technical drawing showing a side view of the contact assembly with dimensions: 0.7, 4.5, 4.5 ± 0.15, 6, 5, and 19.5 ± 0.5. A note indicates 'max 0.2 geöffnet' (max 0.2 open).

3D perspective view of the contact assembly.

2:1

INSUL. RANGE	WIRE RANGE	A	LP NO	FINISH	MATERIAL	PART NO.	REV	
$\phi 2.2-3.0$ mm	$>1-2.5$ mm ²	2.5	1	1241826-5	vorversilbert/PRESILVERED	CuFe2	964203-5	C
		2.5	1	1241826-4	vorversilbert/PRESILVERED 1-1.5 μ m	CuSn4	964203-4	C
		2.5	1	1241826-3	vorversilbert/PRESILVERED 3-4.5 μ m	CuSN4	964203-3	C
		2.5	1	1241826-2	vorverzinkt/PRETINNED	CuSN4	964203-2	C
		2.5	1	1241826-1	vorverzinkt/PRETINNED	CuFe2	964203-1	C

Notes

1 OBSOLETE

2 PRELIMINARY - NOT RELEASED FOR PRODUCTION

3 ONLY FOR 3-927833-2 DIMENSION HAVE TO FOLLOW SHEET 2
- INSULATION RANGE: $\phi 2.7-3.7$
- INSULATION BARREL DIMENSION

THIS DRAWING IS A CONTROLLED DOCUMENT.

DIMENSIONS:	TOLERANCES UNLESS OTHERWISE SPECIFIED:
mm	± 0.2
	0 PLC \pm
	1 PLC \pm
	2 PLC \pm
	3 PLC \pm
	4 PLC \pm
	ANGLES $\pm 1^\circ$
MATERIAL	FINISH
-	-

DWN 06.01.94

ATZMANN

CHK 18.01.94

BARTOSCH

APVD 28.11.07

Bleicher, M.

PRODUCT SPEC

108-18025

APPLICATION SPEC

114-18037

WEIGHT

0.82 g

Customer Drawing

TE Connectivity

NAME
STANDARD POWER TIMER KONTAKT
(Gerade Tulpe)

SIZE	CAGE CODE	DRAWING NO	RESTRICTED TO
A3	00779	C=964203	-

SCALE	SHEET	OF	REV
5:1	1	2	C7

1470-19 (3/11)

THIS DRAWING IS UNPUBLISHED.

RELEASED FOR PUBLICATION

© COPYRIGHT -

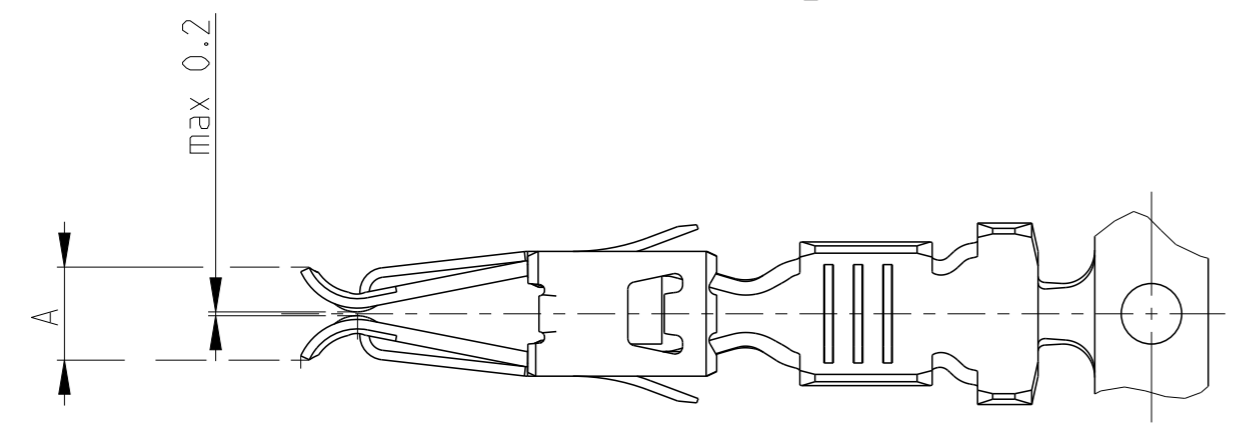
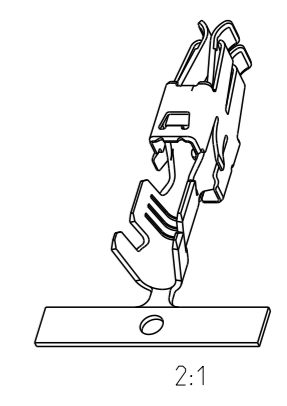
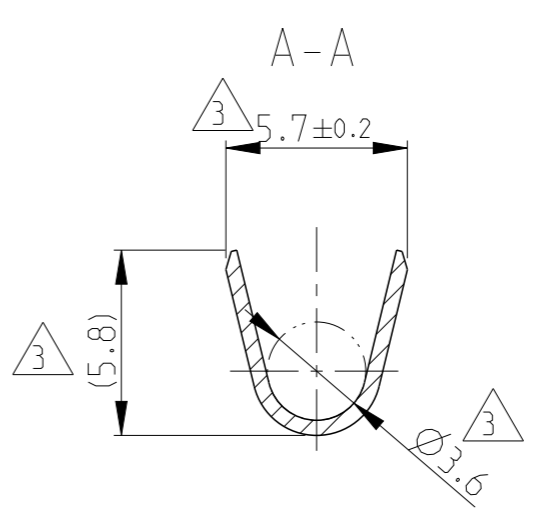
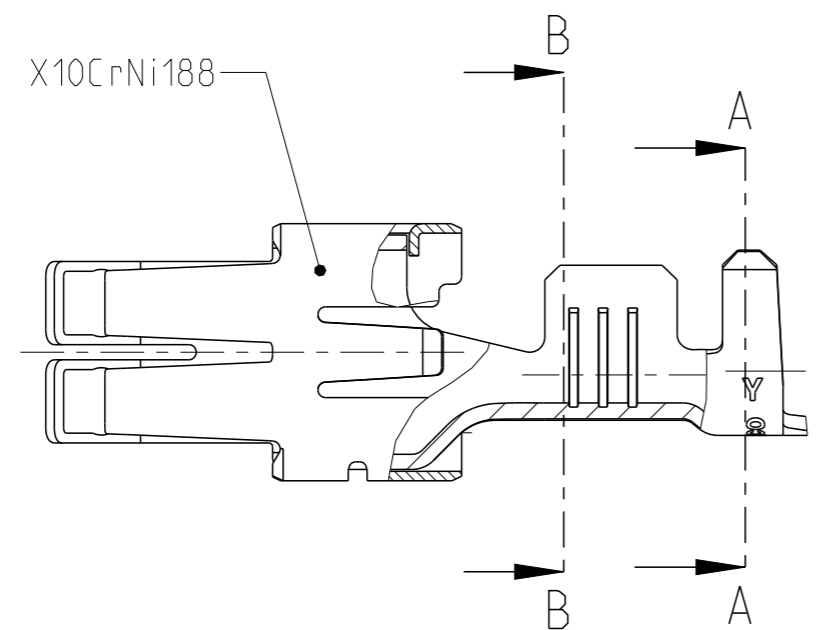
ALL RIGHTS RESERVED.


LOC DIST

REVISIONS

P	LTR	DESCRIPTION	DATE	DWN	APVD
-	-	SEE SHEET 1	-	-	-

ONLY FOR 3-927833-2
OTHER DIMENSIONS SEE SHEET 1



INSUL. RANGE Ø2.7-3.7 mm	WIRE RANGE >1-2.5 mm ²	2.3±0.15	-	PRETINNED	CuSn4	3-927833-2	C
		A	LP NO	FINISH	MATERIAL	PART NO.	REV
THIS DRAWING IS A CONTROLLED DOCUMENT.		DWN ATZMANN 06.01.94	 TE Connectivity NAME STANDARD POWER TIMER KONTAKT (Gerade Tulpe)				
DIMENSIONS: mm		CHK BARTOSCH 18.01.94					
TOLERANCES UNLESS OTHERWISE SPECIFIED:		APVD Bleicher, M. 28.11.07	PRODUCT SPEC				
0 PLC ± 1 PLC ± 2 PLC ±0.2 3 PLC ± 4 PLC ± ANGLES ±1°		APPLICATION SPEC	108-18025				
MATERIAL		FINISH	114-18037				
		WEIGHT	0.82 g				
		Customer Drawing	SCALE	SHEET		REV	
			5:1	2 OF 2		C7	